



£215,000 Guide Price

Spa Road, Harrogate

Terraced House | 3 Bedrooms | 1 Bathroom

01423 276100



[www.newbyjames.co.uk](http://www.newbyjames.co.uk)





# Step Inside

---

## Property Description

\*\* VIRTUAL 360 PROPERTY TOUR \*\*

A well presented three bedroomed mid terrace house situated in this popular and convenient location within close proximity of the railway station.

## Main Particulars

\*\* VIRTUAL 360 PROPERTY TOUR \*\*

A well presented three bedroomed mid terrace house situated in this popular and convenient location within close proximity of the railway station.

This deceptively spacious home is offered with gas fired central heating and uPVC double glazing throughout and comprises in brief; entrance all, kitchen with separate utility area, sitting room with patio doors out to a decked seating area and delightful outlook of the communal green, bathroom and three bedrooms.

Outside an enclosed courtyard garden to the rear with timber shed. To the rear a decked seating area with low level fence and hand gate to the communal green.

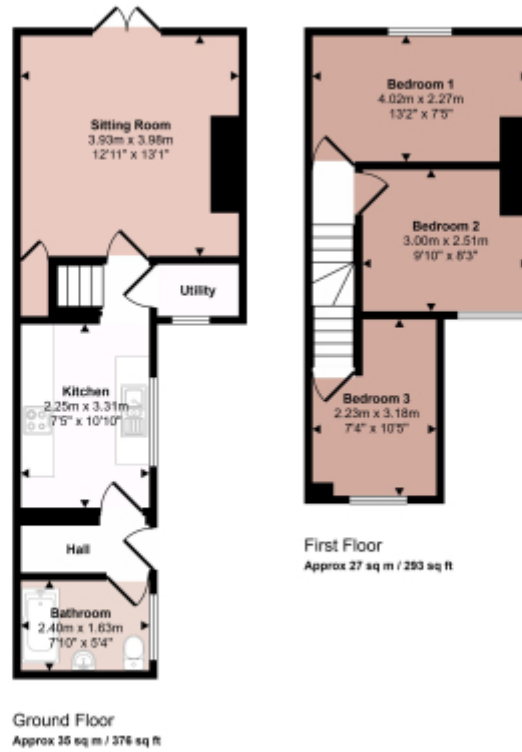
The property occupies a quiet position on this residential street, close to an excellent range of local amenities including shops, schools and railway station.

Tenure: Freehold





Approx Gross Internal Area  
62 sq m / 669 sq ft



This floorplan is only for illustrative purposes and is not to scale. Measurements of rooms, doors, windows, and any items are approximate and no responsibility is taken for any error, omission or mis-statement. Icons of items such as bathroom suites are representations only and may not look like the real items. Made with Made Snaggy 360.

This floorplan is for illustrative purposes only and the location of doors, windows and other items are approximate.

Telephone: 01423 276100

**N**  
NEWBY JAMES  
Estate Agents

[www.newbyjames.co.uk](http://www.newbyjames.co.uk)